

TRIMBLE TIREPULSE TIRE MONITORING SYSTEM



healthy tires healthy profits

Haul trucks arrive on time. Graders and scrapers operate efficiently. On and off-road vehicles keep your personnel moving and productive. And you're no longer concerned that tire problems will take machines out of production.

Imagine how much money you'll save by scheduling tire maintenance during off-hours instead of fixing blowouts that have shut down the site...

It isn't a dream. The Trimble® TirePulse™ Tire Monitoring System and VisionLink® allow you to proactively manage every rubber tire in your fleet and schedule cost-effective preventative maintenance to extend tire life, promote fuel efficiency and avoid safety risks.



Part of the Trimble Connected Site® portfolio, TirePulse wirelessly reports tire temperature and pressure data from your job sites to the VisionLink fleet, asset and site productivity management solution from Trimble. Real-time alerts and daily machine health reports help you stay ahead of potential problems and avoid costly downtime.

INCREASE TIRE LIFE. DECREASE COSTS

Underinflated tires can cause blowouts, machine downtime and a decrease in fuel efficiency. Overheated tires are a safety risk. Managing these factors effectively can mean the difference between profit and breaking even. Trimble TirePulse pays for itself by helping you:

- Extend tire life
- Use less fuel
- Decrease maintenance costs

REAL-TIME ALERTS. REAL-TIME DECISIONS

Spend less time driving to the site and visually inspecting tires. When a tire experiences a 20% drop in pressure, VisionLink sends an email alert in real-time. High temperature alerts can let you know when conditions put tires at risk for breakdown. VisionLink keeps you in control of the site... even when you're in the office.



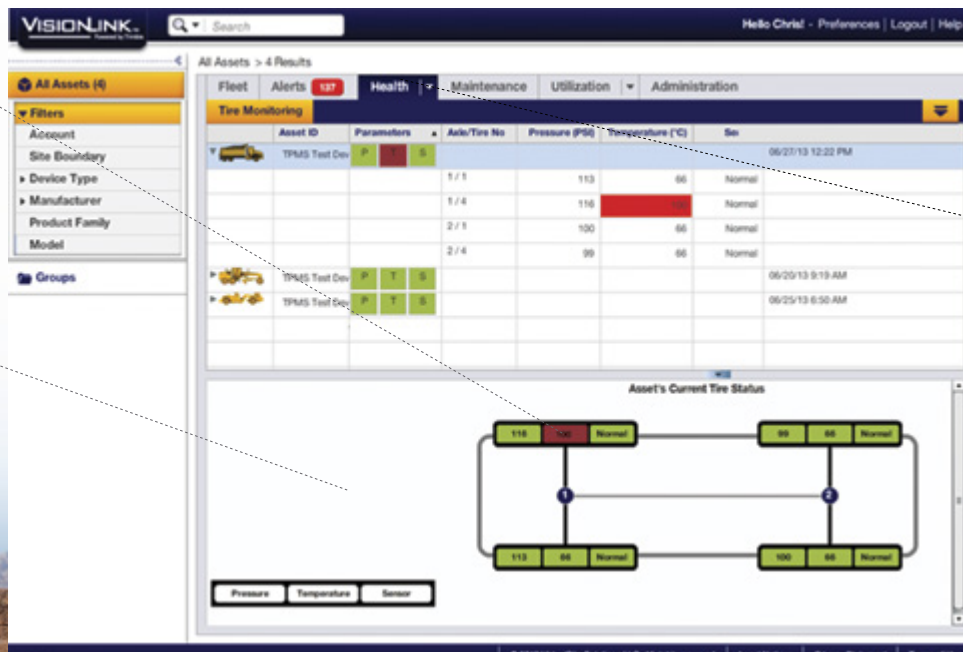
FOR ALL YOUR RUBBER TIRES

Use Trimble TirePulse on all of your rubber-tired assets including:

- Haul trucks
- Scrapers
- Motor graders
- Wheel loaders
- Water trucks
- Pickup trucks

TEMPERATURE ALERT INDICATES TIRES THAT ARE TOO HOT FOR SAFE OPERATION

GRAPHICAL INTERFACE SHOWS THE TIRE STATUS OF A PARTICULAR ASSET



VISIONLINK MACHINE HEALTH TAB SHOWS STATUS AND ALERTS FOR THE ENTIRE FLEET

DESIGNED FOR CONSTRUCTION

Rugged components and easy-to-use software make the Trimble TirePulse system perfect for your fleet of construction equipment.

VisionLink

VisionLink is a web-based fleet, asset and project monitoring solution that gives you access to your telematics and machine health data in one location. With more data at your fingertips, you can better manage your fleet and your costs.

Valve Stem Sensor

Valve stem sensors are available for heavy construction equipment as well as on-site vehicles. Both sensors are built rugged, so you can install them and depend on them for years.

Trimble SNM940 Connected Site Gateway

The Trimble SNM940 Connected Site Gateway transmits machine health reports, production data and telematics information to the fleet manager for analysis. Existing SNM940 units installed for communicating grade control and production data can also be leveraged for tire monitoring with a VisionLink Machine Health monthly subscription.



Connect with your
SITECH Technology
Dealer to see how
much you'll save.

TRIMBLE: THE CONSTRUCTION TECHNOLOGY STANDARD

Trimble provides the tools and support to let you integrate planning, design, site positioning, machine control and asset management information throughout the construction life cycle for more efficient operations and higher profits. Visit your SITECH technology dealer today to learn how easy it is to utilize technology that makes significant improvements in project workflow, dramatically increases your production, improves your accuracy and lowers your operating costs.



YOUR SITECH® HEAVY CIVIL CONSTRUCTION TECHNOLOGY PROVIDER



NORTH AMERICA

**Trimble Heavy Civil
Construction Division**
10368 Westmoor Drive
Westminster, Colorado 80021
USA
(Toll Free) 800-361-1249
Tel. +1-937-245-5154
Fax. +1-937-233-9441
www.trimble.com

EUROPE

Trimble Germany GmbH
Am Prime Parc 11
65479 Raunheim
GERMANY
Tél. +49-6142-2100-0
Fax. +49-6142-2100-550

AFRICA & MIDDLE EAST

Trimble Export Middle-East
P.O. Box 17760
LOB 18 1606 / 1607
JAFZ View
Dubai
UAE
Tél. +971-4-886-5410
Tax. +971-4-88 6-5411

ASIA-PACIFIC

Trimble Navigation Singapore PTE Ltd.
80 Marine Parade Road, #22-06
Parkway Parade
Singapore, 449269
SINGAPORE
Tél. +65-6348-2212
Tax. +65-6348-2232

CHINA

Trimble Beijing
20F, Central Tower, China Overseas Plaza,
No.8 Yard, Guang Hua Dong Li
Chaoyang District, Beijing, PRC
CHINA 100020
Tél. +86-10-8857-7575
Fax. +86-10-8857-7161
www.trimble.com.cn