



C18 INTEGRAL FUEL TANK BASE

Diesel Generator Set
506 – 700 kVA 50 Hz
492 – 600 kW 60 Hz

FEATURES

- UL 142 listed
- Designed and built to comply with NFPA 30, 37, 110
- Direct reading fuel level gauge
- Primary tank leak detection switch in containment basin
- Fuel fill – 101.6 mm (4 in), lockable cap
- Supply and return ports equipped with dip tubes
- Tank design provides capacity for thermal expansion of fuel
- Fuel supply dip tube positioned so as not to pick up fuel sediment
- Internally baffled to separate supply and return fuel ports
- Primary tank atmospheric vent – 50.8 mm (2 in) NPT with cap and screen
- Interior tank surfaces coated with a solvent-based, thin-film rust preventative
- Welded steel containment basin (minimum of 110% of primary tank capacity)
- Tank designed to contain coolant and engine oil spills
- High performance, gloss black, alkyd acrylic enamel exterior paint over epoxy based primer
- Heavy gauge steel gussets with internal lifting rings

DESCRIPTION

- Heavy ¼" steel construction primary (inner) tank and side channels
- Integral diesel fuel tank is incorporated into the generator set base frame.
- Robust base design includes linear vibration isolators between tank base and engine-generator.
- Emergency vent on primary and secondary tanks are sized in accordance with NFPA 30.
- Dual wall.
- Primary and secondary tanks are leak tested at 20.7 kPa (3 psi) minimum.
- Compatible with enclosures (weather protective and sound attenuated).

OPTIONS

- Low fuel level switch (alarm/shutdown)

C18 FUEL TANK BASE (INTEGRAL) USEABLE CAPACITIES

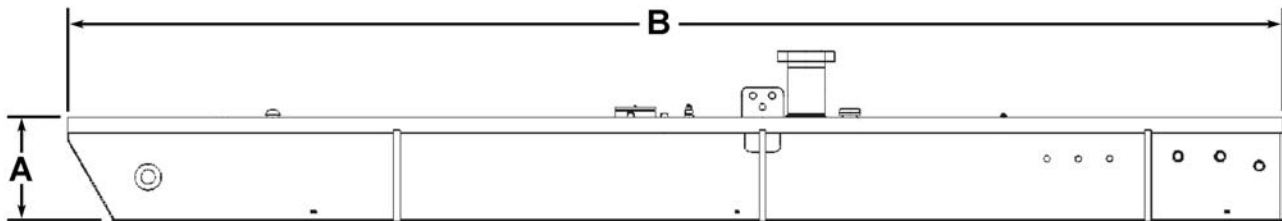
Fuel Tank Dimensions

Single Wall – Width 1461 mm (57.5 in)

Liter	Gallon	Type	Height "A"		Length "B"		Weight lb
			mm	in	mm	in	
1350	356	Integral	550	21.7	4110	161.8	3,420

Dual Wall – Width 1900 mm (74.8 in)

Liter	Gallon	Type	Height "A"		Length "B"		Weight lb
			mm	in	mm	in	
1135	300	Integral	420	16.5	4250	167.3	3,294
1515	400	Integral	505	19.9	4250	167.3	3,546
1890	500	Integral	600	23.6	4250	167.3	3,890



The heights listed above do not include lumber used for skidding during manufacturing and shipping.
Tanks with RH/LH stub-up include stub-up area directly below the circuit breaker or power terminal strips.
Dimensions do not include weather-protective enclosure exhaust system.
Weight is for tank only. Does not include additions or removals required by price list.

UL 142 – Dual wall sub-base tanks are UL listed (File MH17470) and constructed in accordance with Underwriters Laboratories Standard UL 142 "Steel Aboveground Tanks for Flammable and Combustible Liquids."

NFPA – Fuel tanks are built in accordance with the following NFPA Codes:
NFPA 30 – Flammable and Combustible Liquids Code
NFPA 37 – Standard for Installation and Use of Stationary Combustible Engine
NFPA 110 – Standard for Emergency and Standby Power Systems

Information contained in this publication may be considered confidential.

Discretion is recommended when distributing.

Materials and specifications are subject to change without notice.

CAT, CATERPILLAR, their respective logos, "Caterpillar Yellow," the "Power Edge" trade dress, as well as corporate and product identity used herein, are trademarks of Caterpillar and may not be used without permission.

www.Cat-ElectricPower.com

© 2011 Caterpillar
All Rights Reserved.
Printed in U.S.A.